



## Other things to deal with while doing the stalls

### Reproduction



# What are you going to hear about today



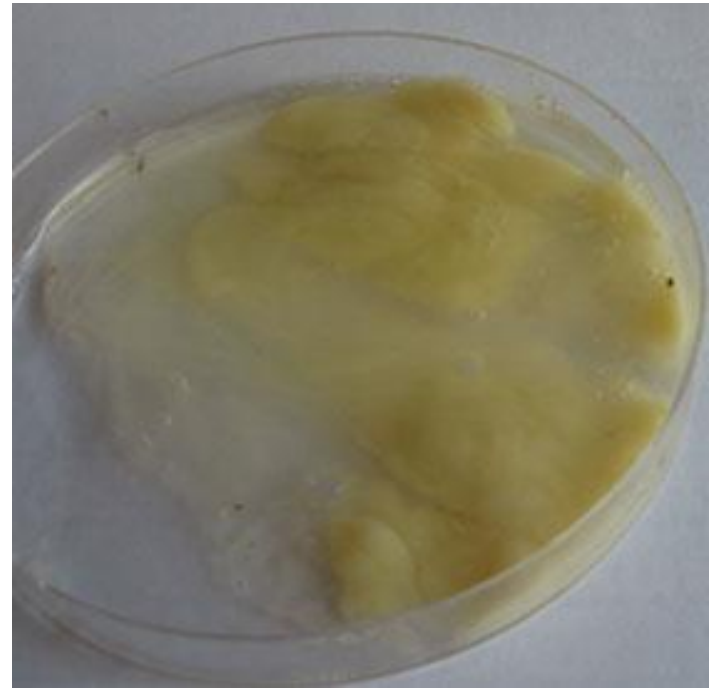
- ➔ Reproduction – where it all begins
- ➔ Other things to look for... Signs of:
  - Reproductive diseases
  - The normal reproductive cycle
  - Use all the signs!
- ➔ Why worry about reproduction
  - Biological importance
  - The economy of reproduction



# Where it all begins



# Signs from the normal cow



Normal discharge 1-15 days



# Signs for the abnormal cow

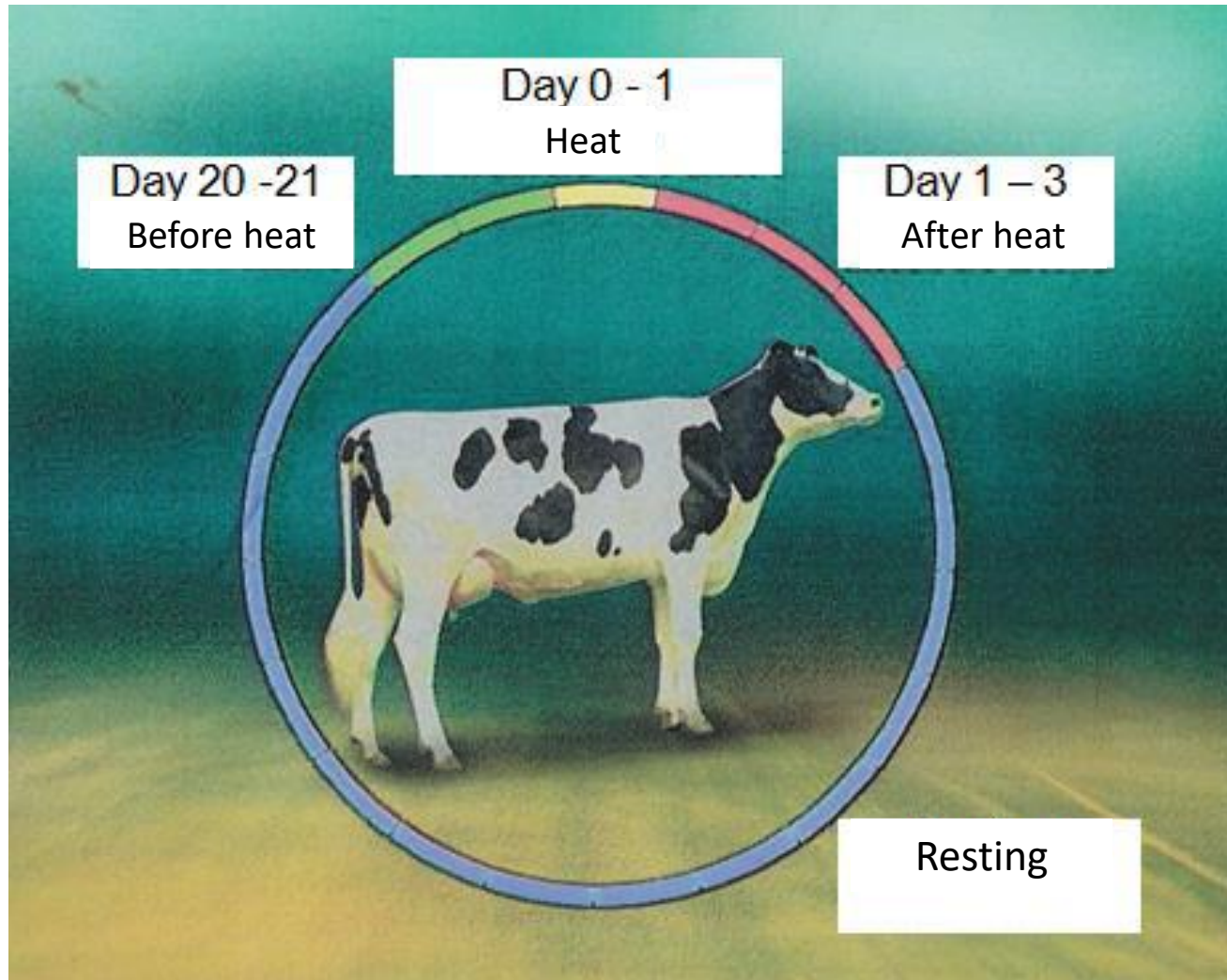


Abnormal discharge 1-15 days





# Cows' cyclus

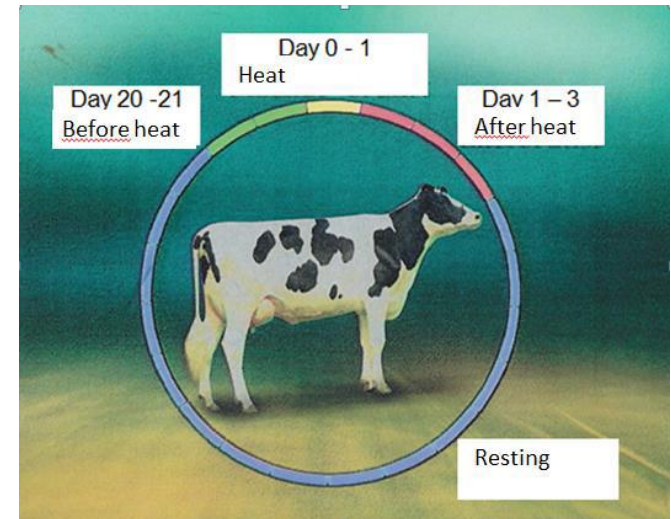


# What to look for – before heat



## ➔ Before heat | day 20-21: —

- Mucus from the vagina
  - Not clear, thick
- Restless, roars
- Jumping on other cows
- Swollen and red vulva

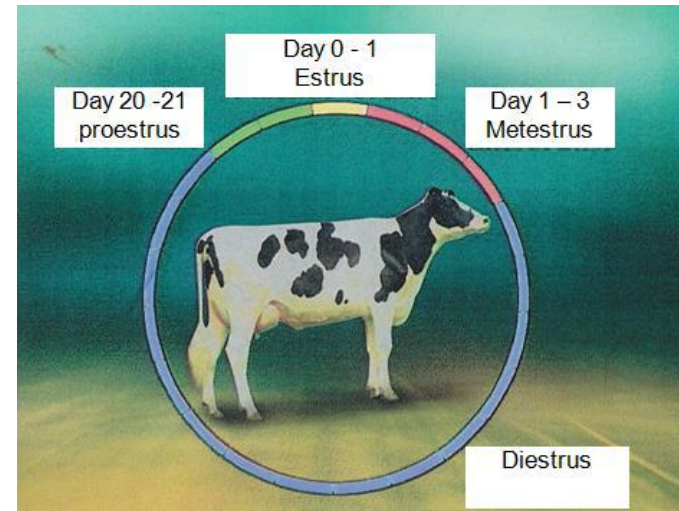


# What to look for – signs of heat



## ➔ Standing heat | day 0-1: ————

- Standing for jumps from other cows
- Clear and stringy mucus
- Reduced appetite
- Milk retention





# Signs to look for – after heat



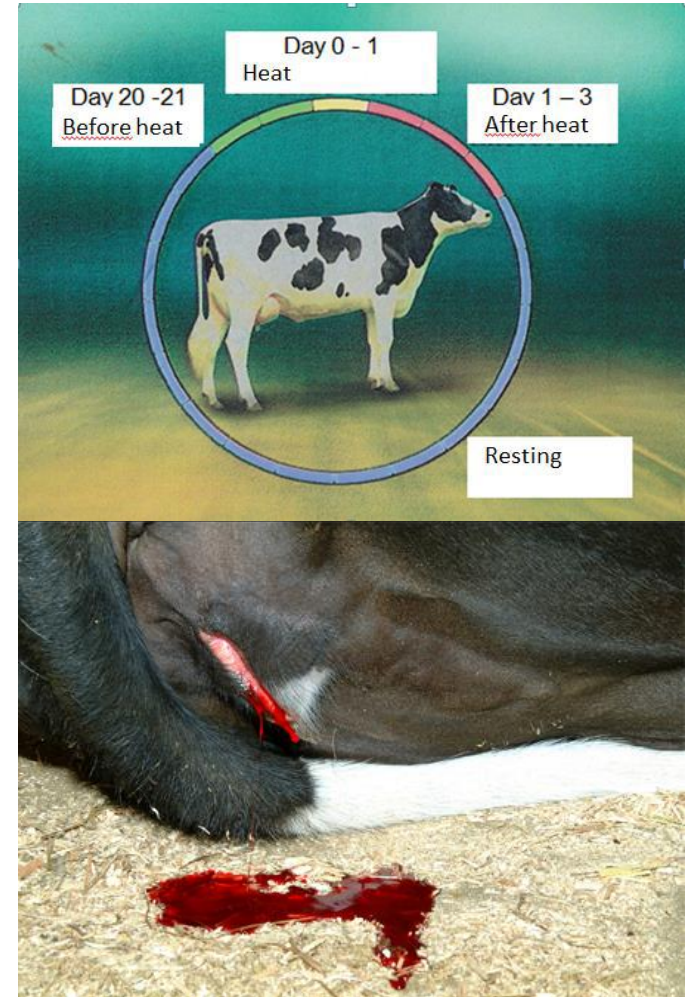
## ➔ After heat | day 1-3:

- Blood floating from vulva



## ➔ Resting | day 4-18:

- The cow is back in its normal condition, but can still show minor signs of heat



# The most important signs of heat



- ➔ The animal can be a little nervous, more active and have an elevated head
- ➔ Licking and sniffing other animals
- ➔ The vulva is red and swollen
- ➔ The animal in heat can be sweaty
- ➔ Damage to the skin on the top of the tail
- ➔ Changes in normal behavior – when does she visit the milking parlor?
- ➔ Gathering on specific places in the stables



**USE ALL THE SIGNS!**

# Why?



- ➔ The strength of heat signs vary!
  - ➔ Standing for other cows jumping ~55% of the cows in heat
  - ➔ Lame cows or low ranked cows show weak signs
  - ➔ Heat detection sensors?
- ➔ High yielding cows have short heats
  - >55 L milk ➡ ~3 hours of strong heat signs
- ➔ Time is the limit



# Visual heat detection



Observations	Time for observation					Heat detection rate		
						30 min.	20 min.	10 min.
2	06.00		20.00			62.9	37.1	14.3
2	06.00		22.00			48.6	31.4	8.6
5	06.00	10.00	14.00	18.00	22.00	85.7	62.9	37.1

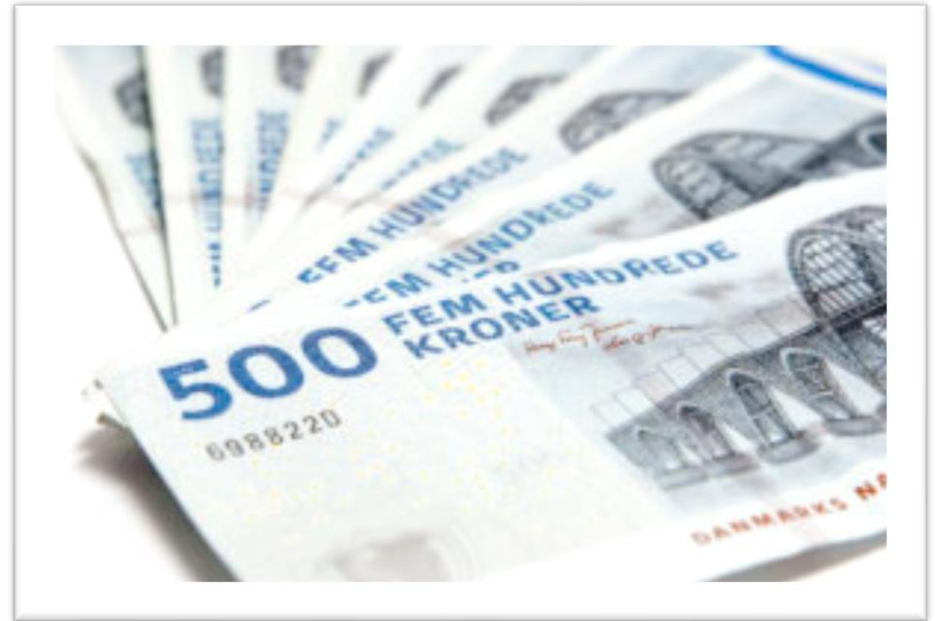
Efficient heat detection while doing stalls?





## Why worry about reproduction – biology and money

➔ What happens when reproduction is bad?



## Other things to deal with while doing the stalls



➔ Take home messages:

NOTE:

Abnormal behavior

Jumping activities

Other reproductive related observations

Discharge (mucus, blood, uterine infections)

**And act on it!**

**Thank you for listening!**

